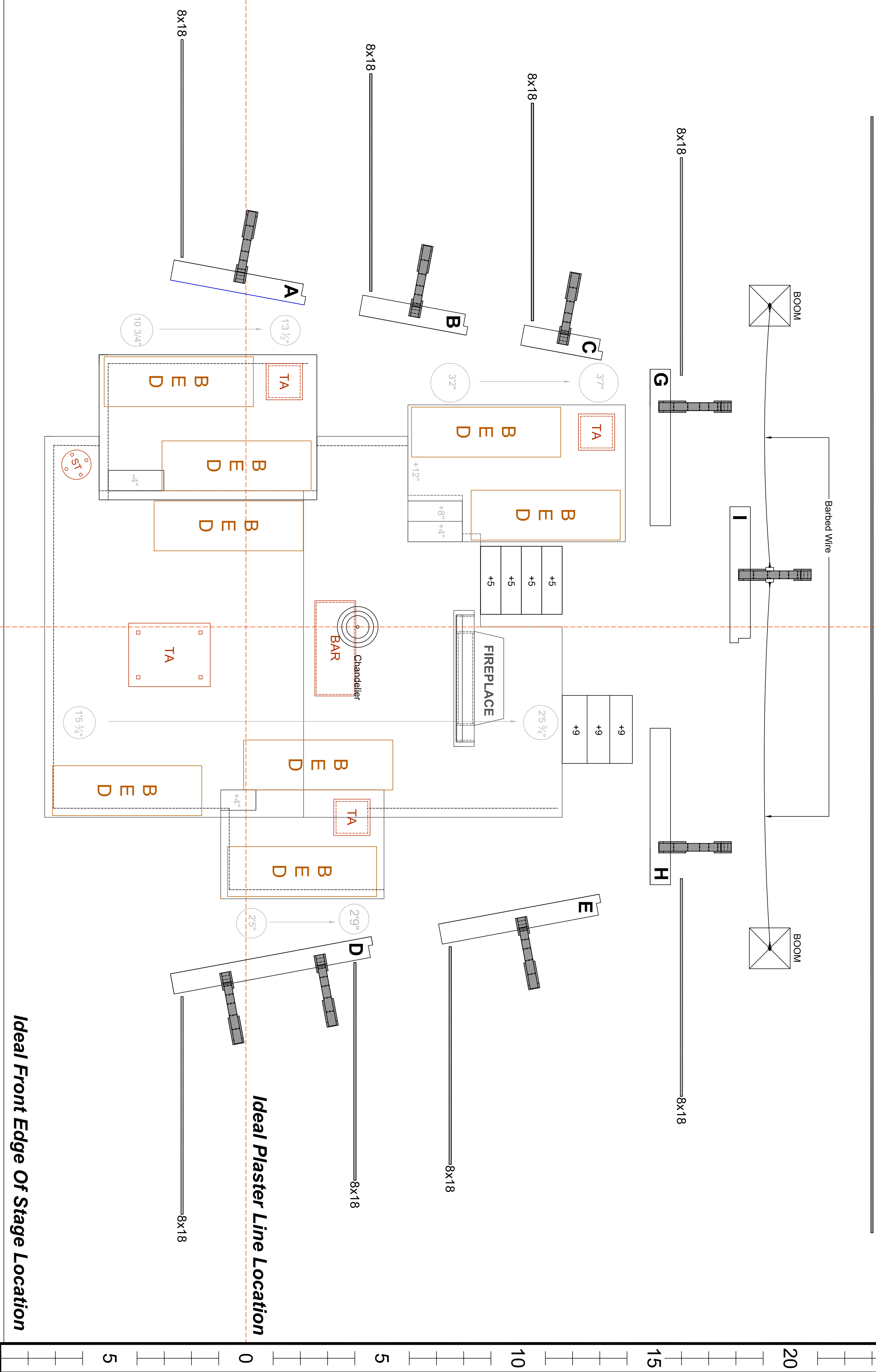


BLACK DRAPE



20 18 16 14 12 10 8 6 4 2 0 2 4 6 8 10 12 14 16 18 20

Q

Ideal Front Edge Of Stage Location

Ideal Plaster Line Location

**NOTES:**

It is the desire of this production to allow the actors and the set of this production to be in as close proximity to the audience as is both convenient and possible within your facility. The set will be placed on the stage to allow the action to be as close to the audience and still utilize the proper lighting positions available in order to provide the maximum quality visual experience. Thus, please note the following:

**OPTION ONE:** If your theatre has an orchestra pit and the show can be properly lit using the space available over the orchestra pit as actor playing space, the orchestra pit should be covered at stage level in advance of the production's load-in.

**OPTION TWO:** If your theatre has an orchestra pit and the show cannot be properly lit using the space available over the orchestra pit as actor playing space, the orchestra pit should be covered at seating level and audience seats placed and sold as a part of the venue's ticket sales in advance of the production's load-in.

**PLEASE NOTE:** The set does contain a raised deck; the venue must consider, in placement of the set, any restrictions to the fire curtain that this deck may cause when breaking the fire curtain line. The venue may need to supply, by local fire ordinances, additional fire safety personnel for this reason and for the protection of the facility given the use of live flame for two lit candles during the performance.

**THE RESPONSIBILITY TO SUPPLY NECESSARY FIRE SAFETY PERSONNEL AND ADHERE TO LOCAL FIRE REGULATIONS IS THE SOLE RESPONSIBILITY OF THE PRESENTER.**

It is the responsibility of the venue to coordinate with the production in advance of the performance as to the placement of the set upon the stage in relationship to any existing obstacles or opportunities such as an orchestra pit as per above.

**IMPORTANT:** The distance from the top of the bar to the bottom of the chandelier **MUST** be 55".

**MISC. NOTES:**

Barter Theatre - NATIONAL TOUR

**DIARY OF ANNE FRANK**

Ground Plan (Option #1)

DIRECTOR: Richard Rose

TECH. DIRECTOR: Matt Evans

DESIGN: Dale Jordan

SCALE: 1/2" = 1'-0"

REVISED: April 28, 2010

PLATE: 1

Barter Theatre - NATIONAL TOUR

**DIARY OF ANNE FRANK**

Ground Plan (Option #1)

DIRECTOR: Richard Rose

TECH. DIRECTOR: Matt Evans

DESIGN: Dale Jordan

SCALE: 1/2" = 1'-0"

REVISED: April 28, 2010

PLATE: 1